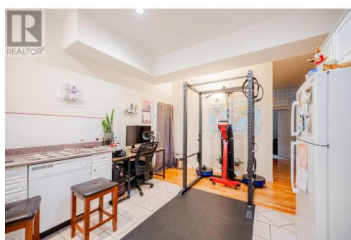




2258 Lillooet Crescent Kelowna British Columbia

Dilworth Mountain

\$1,050,000



This spacious 6-bedroom, 3-bathroom home, with two kitchens (one on each level), is ideally situated in the heart of the Dilworth Mountain neighborhood. The main floor features an open-concept gourmet kitchen with a central island, Silestone countertops, and stainless steel appliances. A cozy gas fireplace enhances the family room's warmth. The home offers 3 bedrooms upstairs and 3 more downstairs, with the basement including its own kitchen--perfect for a growing family or guests. Nearby schools and shopping centers add to the convenience. Beautiful landscaped backyard with a water fountain , enjoy the peaceful natures in the backyard! (id:6769)

Linda Sunny Sun

Laboutique Realty (Kelowna)

Phone: (250) 899-3332



RE/MAX Kelowna
100-1553 Harvey Avenue
Kelowna, BC,
Canada