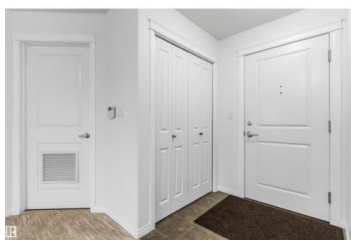
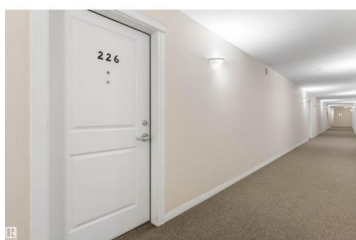
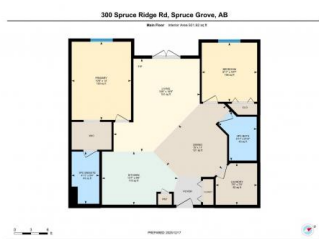


Spruce Grove Alberta

Spruce Ridge

\$210,000



Discover comfortable, carefree living in this inviting west-facing condo, perfectly positioned within walking distance to all everyday conveniences. Offering 931 sqft of thoughtfully designed space, this air-conditioned home welcomes you with an open concept layout that blends the kitchen & living area into a warm, social hub. The stainless steel appliances & central island of the kitchen, and a cozy dining nook are both stylish & functional, while large windows bathe the space in the brilliance of every sunset. Step outside to your private balcony and enjoy peaceful views as the day winds down. The generous primary suite features a walk-through closet leading to a private 3pc ensuite, with stand up shower. A 2nd bedroom is ideal for guests or home office and is served by a bright 4pc bath. In-suite laundry, ample storage, underground parking & storage cage, add everyday ease and value. Located close to scenic walking trails, this condo is ideal for first time homeowners, empty nesters & investors! (id:6769)

Marty J. Weishaupt

Royal LePage Noralta Real Estate

Phone: (780) 850-1595

<http://movewithmarty.realtor/>



RE/MAX Kelowna
100-1553 Harvey Avenue
Kelowna, BC,
Canada