



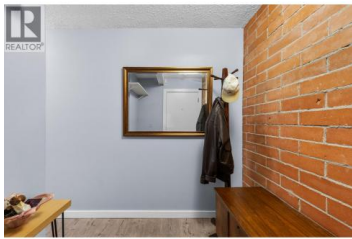
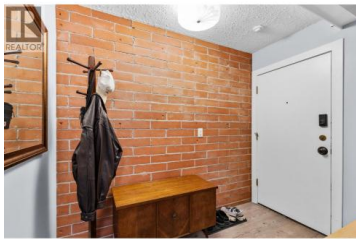
1665 Ufton Court 227 Kelowna British Columbia

Glenmore

\$389,000



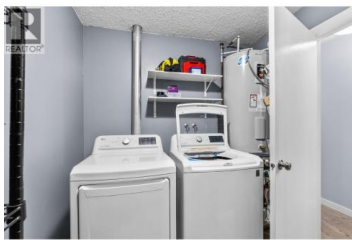
Bright corner suite in Tudor Manor, ideally located in the heart of Kelowna. This spacious 2-bedroom, 2-bathroom home offers over 1,000 sq. ft. of comfortable living with a practical galley kitchen and newer flooring. The functional layout features a generous primary bedroom with a 3-piece ensuite, in-unit laundry, and two balconies, one enclosed to create a cozy sunroom or flexible space. Enjoy a quiet, secure building with elevator access and underground parking, all just minutes from shopping, parks, recreation, and transit, making this a great opportunity for first-time buyers, downsizers, or investors. (id:6769)



Benoit Vaudry

Royal LePage Kelowna

Phone: (250) 307-1130



RE/MAX Kelowna
100-1553 Harvey Avenue
Kelowna, BC,
Canada