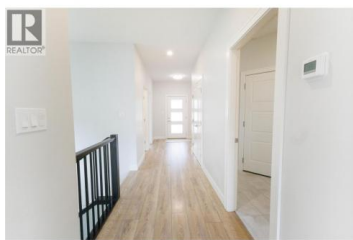
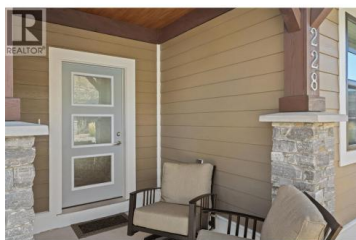




641 Shuswap Road 228 Kamloops British Columbia

South Thompson Valley

\$899,900



Welcome to 228-641 Shuswap Road E in the highly sought after gated community of Sienna Ridge! This immaculate home has luxury finishes, smart technology, and resort level comfort all just minutes from downtown Kamloops. Inside, a seamless open concept layout is enhanced by soaring ceilings, natural light, and quartz countertops throughout the entire home, including the laundry room. The chef's kitchen offers high end appliances, a large island, and generous prep space that flows effortlessly into the dining and living area - perfect for entertaining or enjoying cozy evenings by the fireplace plus the TV is included! The primary suite serves as a private retreat, with another TV included, featuring a large walk in closet, a beautifully updated ensuite with heated floors, upgraded double vanity, and a beautifully tiled walk-in shower with body jets and a rain head for a true spa-like experience. Downstairs, a true wine enthusiast's dream!! A custom temperature controlled wine cellar with Sapele wood racking, and a built-in wet bar with imported tiles to give that extra dreamy feel! With a movie theatre featuring surround sound as well, this area makes for a perfect hosting space or wine tasting event for your friends and family! Outside, the private, low-maintenance yard with covered patio, creating the perfect setting to unwind. Every detail of this home has been thoughtfully...



RE/MAX Kelowna
 100-1553 Harvey Avenue
 Kelowna, BC,
 Canada

Gaby Berry

eXp Realty (Kamloops)

Phone: (778) 586-4797

<http://www.gabyberry.exp Realty.com>

/

