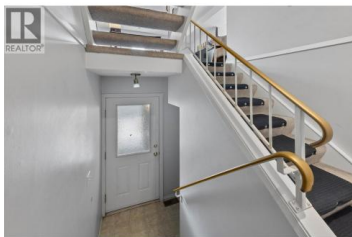




## 1435 Summit Drive 23 Kamloops British Columbia

Sahali

# \$339,000



Welcome to Sahali Mews! This well-maintained 2-bedroom, 1-bathroom townhouse offers a functional and desirable layout with main floor living and both bedrooms located upstairs for added privacy. The bright main level features a spacious living room, dining area, and kitchen, along with a convenient pantry/laundry room just off the kitchen. Step outside from the dining area onto the deck, perfect for enjoying your morning coffee or summer BBQs. Upstairs, you'll find two comfortable bedrooms, including a generous primary bedroom with its own sundeck--an ideal spot to unwind at the end of the day. Conveniently located in the heart of Sahali, this home is close to shopping, restaurants, schools, parks, public transit, Thompson Rivers University, and all amenities. Whether you're a first-time buyer, investor, or looking to downsize, this is an excellent opportunity to own in one of Kamloops' most convenient neighbourhoods. (id:6769)

### Kyle Panasuk

Royal LePage Westwin Realty

Phone: (250) 374-1461



RE/MAX Kelowna  
100-1553 Harvey Avenue  
Kelowna, BC,  
Canada