



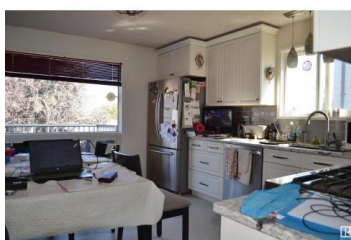
Edmonton Alberta

Canon Ridge

\$440,000



Spacious three plus a fourth bedroom in the lower level Bi-Level in Canyon Ridge. Double attached garage. Large lot and recently updated decking material.. Basement is mostly developed and has a large storage area, games, recreation room and the fourth bedroom as well as a four piece bathroom. Double attached garage and space on the side for a small RV or trailer. High Efficiency furnace 2008 (id:6769)

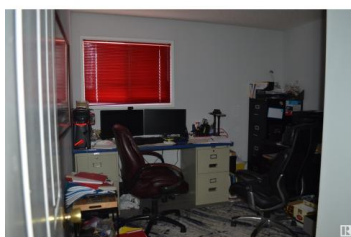
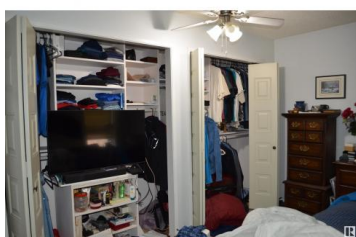
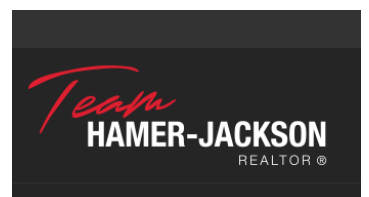


Denis G. Rowley

RE/MAX Elite

Phone: (780) 908-7000

<http://www.denisrowley.com/>



RE/MAX Kelowna
100-1553 Harvey Avenue
Kelowna, BC,
Canada