

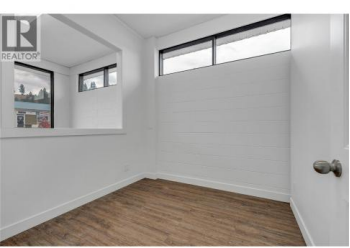
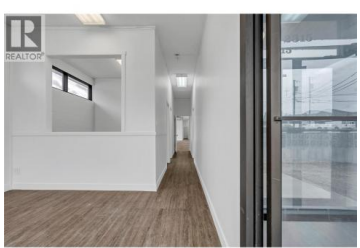
2315 Government Street Penticton British Columbia

Industrial Area

\$13

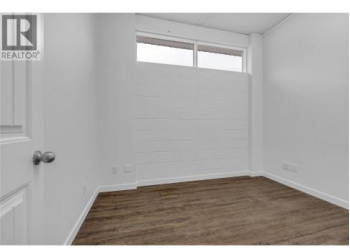
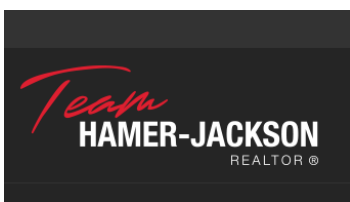


Excellent setup for this approximately 2,900 sq ft flexible commercial/industrial space. The unit features two 8 ft bay doors and double man doors for convenient access and efficient shipping and receiving. The majority of the space is open and free-span with 12-foot ceilings. It also offering a professional front entrance complete with a lobby and several office and storage areas -- easily removed if not required. Situated in a well-established and highly accessible area of Penticton, the unit also benefits from ample customer and employee parking. (id:6769)



John Green
Chamberlain Property Group Inc.

Phone: (250) 486-5353
<https://teamgreen.ca/>



RE/MAX Kelowna
100-1553 Harvey Avenue
Kelowna, BC,
Canada