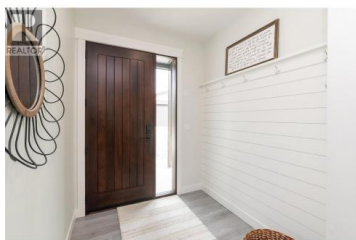




2334 6 Avenue Salmon Arm British Columbia

SE Salmon Arm

\$605,000



Welcome to 2334 6 Avenue SE – where modern comfort meets effortless living. This beautifully designed 1,089 sq. ft. rancher offers stylish one-level living with two bedrooms and an easy, low-maintenance lifestyle perfect for downsizers, first-time buyers, retirees, or busy professionals seeking a move-in ready home without compromise. The bright open-concept layout is both functional and inviting, featuring a thoughtfully designed kitchen with ceiling-height cabinetry, abundant storage, and a large island ideal for entertaining, casual dining, or your morning coffee. Every inch of this home has been carefully planned to maximize comfort and simplicity while maintaining a clean, contemporary feel. Outside, the fully fenced gravel backyard offers privacy and virtually no maintenance – perfect for pet owners, travellers, or anyone wanting to spend less time on yard work and more time enjoying life. Conveniently located close to schools, amenities, and a bus route, this home offers everyday ease in a desirable neighbourhood. Plus, enjoy the remainder of the New Home Warranty and the added bonus of NO GST, making this an exceptional opportunity to own a nearly new home with peace of mind and added value. (id:6769)

Jessica Steel

Royal LePage Access Real Estate

Phone: (250) 515-1022



RE/MAX Kelowna
100-1553 Harvey Avenue
Kelowna, BC,
Canada

