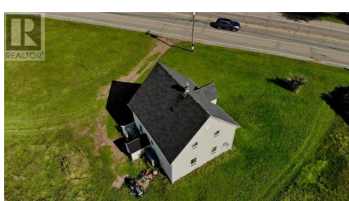
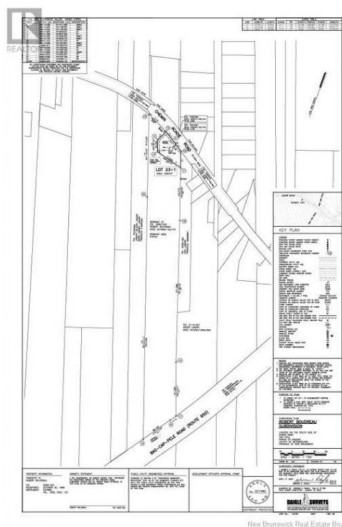




Bas Cap Pele New Brunswick

\$299,000

New Brunswick Real Estate Board



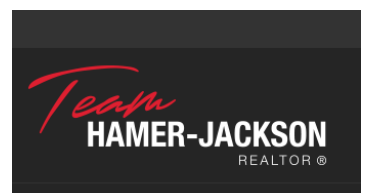
Check out the DRONE VIDEO Incredible Development, Investment, Hobby Farm, Agriculture, or Private Residence Opportunity Unlimited Potential 16.35 Acres in the Coastal Jewel of Cap-Pele! This exceptional property offers a rare opportunity to invest in one of southeastern New Brunswicks most sought-after coastal destinations, complete with breathtaking coastal views. The land features a gentle slope and charming apple trees, providing a picturesque setting perfect for a residential community, high-end cottage retreat, your dream home, or hobby farm or agricultural use . Zoned Residential Improved (RI), this prime location is ideal for developers, investors, or those seeking a peaceful rural lifestyle with modern conveniences nearby. The property includes a farmhouse that will house needs a full gut to bring it back to its original life , (sold as is). Just minutes from Shediac, Moncton, and PEI, and within walking distance to Aboiteau Beach, residents can enjoy warm ocean waters, scenic trails, boating, golf courses, the intergenerational community center and vibrant Acadian culture. The area is known for its top-rated restaurants, and welcoming community with deep cultural roots. With new infrastructure on the rise and proximity to all essential amenities, this is a once-in-a-lifetime opportunity to secure prime real estate in a booming market. Check out the DRONE VIDEO a...

Janice Belliveau

RE/MAX Quality Real Estate Inc.

Phone: (506) 312-1629

<http://www.janicerealty.ca/>





RE/MAX Kelowna
100-1553 Harvey Avenue
Kelowna, BC,
Canada