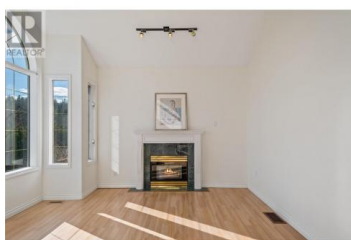
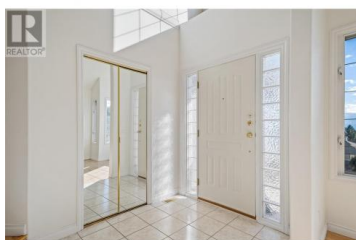


2368 Nahanni Court Kelowna British Columbia

Dilworth Mountain

\$924,900



So much potential for this spacious, bright Dilworth home! Centrally located with mountain views - this 4 bedroom + den, 2.5 bathroom home offers stunning mountain views and an inviting layout that includes TWO living room spaces on the main level -- one with balcony access, a bright kitchen, a dining space, powder room, and a versatile flex room -- ideal for a home office or extra bedroom. Access to the low-maintenance backyard from the main level. Top floor has the primary bedroom w/ walk-in closet, ensuite and private balcony access. Two additional bedrooms and a full bathroom complete the upper level. The lower level presents possibilities with a separate entrance through to the double garage. The open space downstairs is ideal for a media room, play area, or extra bedroom, plus there's an additional bonus space (enclosed, no closet or window) and ample storage. Located just minutes from shopping, top-rated schools, parks, and transit, with easy access to hiking trails at Dilworth Mountain Park, this home perfectly balances convenience, comfort, and natural beauty. A must-see in one of Kelowna's most sought-after neighborhoods! (id:6769)

Mahta Sadi

Oakwyn Realty Okanagan

Phone: (250) 863-8566



RE/MAX Kelowna
100-1553 Harvey Avenue
Kelowna, BC,
Canada

