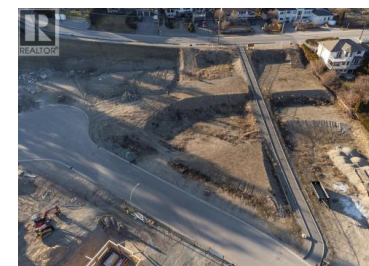
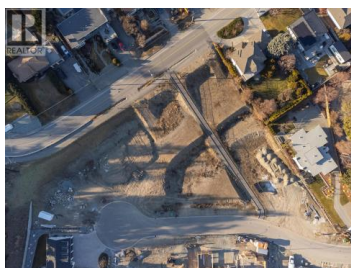
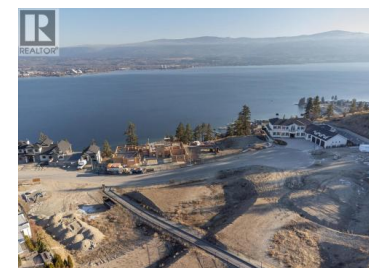
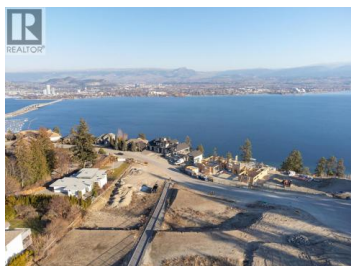
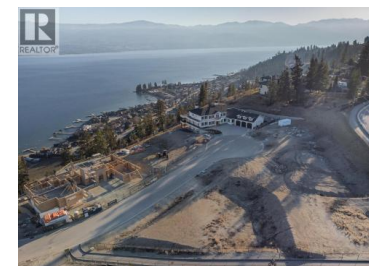


## 2370 Bridgeview Road West Kelowna British Columbia

Lakeview Heights

**\$699,000**



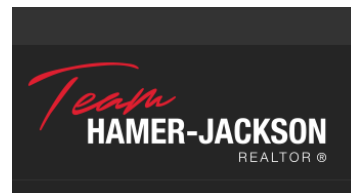
Welcome to Estates on Bridgeview, a collection of custom lots tucked into a quiet cul-de-sac in one of West Kelowna's most desirable neighbourhoods. Located near the cul-de-sac, this lot (lot #10) offers added privacy and a peaceful setting. This community offers a rare opportunity to design and build a timeless residence. All services are available at the lot line, providing a seamless starting point for your vision. Architectural guidelines are in place to ensure a cohesive, estate-style aesthetic inspired by classic manor homes and enduring design. Build with Lake Valley Homes or bring your own builder. Perfectly positioned just minutes from the Westside Wine Trail, excellent schools, neighbourhood parks, and the shoreline trails of Kalamo Regional Park, this location balances everyday convenience with the outdoor lifestyle the Okanagan is known for. Downtown Kelowna is a short drive away, offering easy access to dining, culture, and amenities. (id:6769)

### Paul Heinrich

Unison Jane Hoffman Realty

Phone: (250) 717-7345

<https://www.janehoffman.com/>



RE/MAX Kelowna  
100-1553 Harvey Avenue  
Kelowna, BC,  
Canada