



2375 SHEARER Crescent Prince George British Columbia
\$444,000



Fantastic location close to schools, shopping, and recreation, backing onto a quiet, treed schoolyard. The main level features a bright living area, 3 bedrooms, 1 bathroom, and all-new windows. Downstairs offers a spacious rec room, 4th bedroom, den, second bathroom, laundry area, and workshop/storage space. The separate outside basement entrance provides excellent suite potential. Outside, enjoy a fully fenced, private yard, a 20' x 10' wired and insulated workshop, a charming fire pit area, and beautiful flower gardens that add color and charm throughout the season. (id:6769)

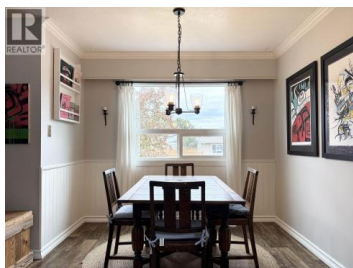
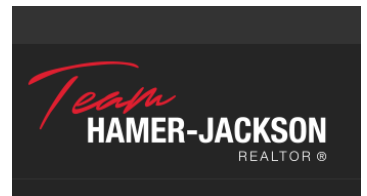


Breanne Cote

Royal LePage Aspire Realty

Phone: (250) 640-2486

<http://www.breannecote.ca/>



RE/MAX Kelowna
 100-1553 Harvey Avenue
 Kelowna, BC,
 Canada