

## 2835 Canyon Crest Drive 24 West Kelowna British Columbia

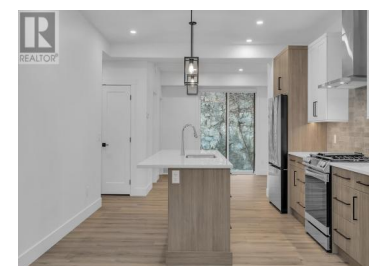
Shannon Lake

**\$689,900**



**\*\*EDGE VIEW AT TALLUS RIDGE SHOWHOME OPEN SAT & SUN 12-3PM\*\***

The best value new townhomes in West Kelowna! Home #24 is MOVE-IN READY and is the best priced in the community! This 3-storey walkup inside home features approx 1608 sqft, 3 bedrooms, 3 bathrooms, yard/patio, double car tandem garage and \$13,500 in included upgrades. The main living floor features 9' ceilings, vinyl flooring, an open concept kitchen with pantry, premium quartz counters, slide-in gas range stove, stainless steel dishwasher and refrigerator. Upstairs is the spacious primary & ensuite, 2 additional bedrooms, a bathroom and laundry. Advanced noise canceling Logix ICF blocks built in the party walls for superior insulation. 1-2-5-10 year NEW HOME WARRANTY, meets step 3 of BC's Energy Step Code. Quick 5 min drive to West Kelowna's shopping, restaurants and entertainment. Close to top rated schools. Walk to Shannon Lake and the golf course. Plus, plenty of walking and biking trails nearby. Take advantage of BC's expanded property tax exemption - an additional \$11,998 in savings. Listing photos of a similar home at Edge View. (id:6769)



**Darcy Nyrose**

RE/MAX Kelowna

Phone: (250) 575-1946

<http://www.kelownarealestatepros.com/>



**RE/MAX Kelowna**  
100-1553 Harvey Avenue  
Kelowna, BC,  
Canada

