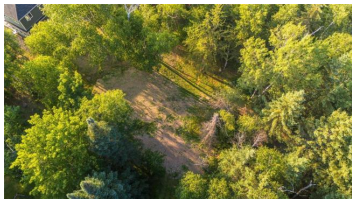




24 Block 1 Road Whiteshell Provincial Pk Manitoba

R29

\$595,000



R29//Whiteshell Provincial Pk/Here is a great opportunity for a Westerly-facing, lakefront building lot located at Red Rock lake in the Whiteshell Provincial Park! Bonus inclusion is a two storey guesthouse/boathouse/sunroom at the water. This low profile 84.5' x 163' rectangular shaped lot is perfect for a new build. The site drains well with no low lying areas. The cost of demolition and disposal of the prior cottage has been absorbed by the present owner and won't be an expense you'd typically otherwise be looking at for a tear down cottage. The location is quiet and soothing with great neighbours. Built in 2018 this beautiful two storey structure meets many expectations. The lower level offers boat storage that will accept a sizeable run about. All that is required is a rail system. Adjoining the boat house on the main level is a bright, pine finished sunroom complete with decking. The second level features a 400 square foot guesthouse. Finished in pine this fantastic living area with patio doors onto a 200 square foot upper level deck gives a panoramic sunset view of Red Rock Lake. You'll be able to overnight in your lakeside guesthouse as you oversee your new dream cottage build. (id:6769)

Thorsen Sigmar

Lifestyles Real Estate Ltd.

Phone: (204) 250-6654



RE/MAX Kelowna
100-1553 Harvey Avenue
Kelowna, BC,
Canada

