

2406 PERRIER LANE Nelson British Columbia

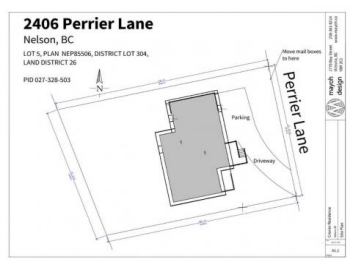
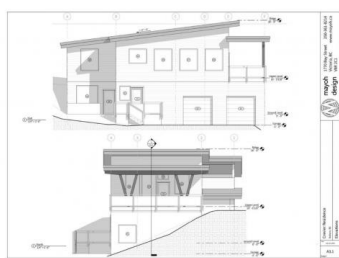
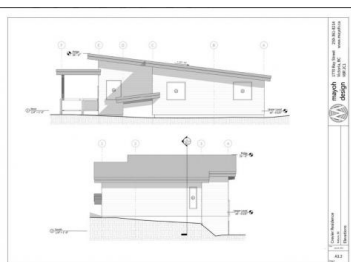
Nelson

\$234,900

1770 Bay Street 250-361-8214
Victoria, BC www.mayoh.ca
V8R 2C1
mayoh design



Crevier Reside
Nelson, BC
Overviews
July 25, 2022
A0.2
Drawn by



This remarkable lot, situated in Morning Mountain Subdivision, offers you the chance to build your dream home in a tranquil, natural setting. Nestled between two beautifully duplexed and strata-developed lots, this parcel provides the perfect canvas for your vision. This lot may be the perfect option for the investor looking to build a side by side duplex, or an up and down duplex. Additionally, the sale includes meticulously crafted plans tailored to a home on this lot, ensuring a smooth and efficient construction process. Location is key, and this property excels in that regard. You'll find yourself just minutes away from the vibrant downtown Nelson, known for its culture, dining, and recreational activities. The Morning Mountain Subdivision is a testament to modern design, with a variety of newer homes showcasing unique architectural styles. Vacant lots within city limits are becoming increasingly rare, making this offering all the more valuable. Don't miss out on the opportunity to make this beautiful piece of Morning Mountain yours. Seize the chance to embrace mountain living while enjoying the convenience of city life. Contact me today to explore this extraordinary property and envision the home or investment property of your dreams. Act swiftly, as opportunities like this are truly one-of-a-kind! (id:6769)



RE/MAX Kelowna
100-1553 Harvey Avenue
Kelowna, BC,
Canada

Dan Beekman

Stonehaus Realty Corp.

Phone: (250) 777-7293

