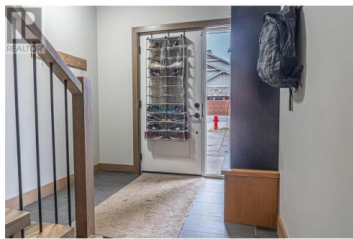




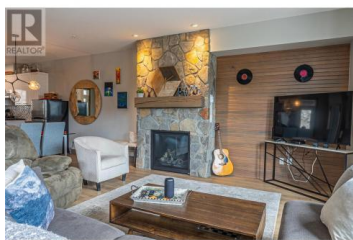
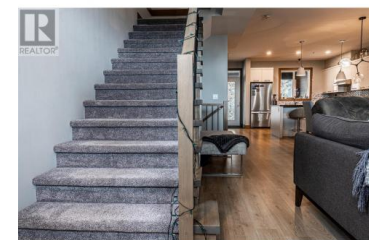
240B Grizzly Ridge Trail Big White British Columbia

Big White

\$859,900



Newer 4 bedroom semi-detached townhome. Consists of 3 bedroom main home + 1 bed ground level in-law suite. Large double car garage with 4 outside spots in long driveway. Parking for quads, snowmobiles and vehicles. The main living area features a large kitchen with granite counters, engineered hardwood floors, open to large living/dining room with floor to ceiling stone FP. Patio doors from kitchen to large covered patio , pre-wired for hot tub. Strong mountain views to the south, easy ski in/out at the top of snowpines area! Rented for \$4800 monthly to end of April , buy and close now to receive great income for the next 5 months at reduced rates with rates forecast to fall further yet !! Win win! Price is plus GST Big White not subject to short term rental, foreign ownership, or vacancy/spec tax restrictions ! (id:6769)



Steven Hyndman

Realty One Real Estate Ltd

Phone: (250) 878-3608



RE/MAX Kelowna
100-1553 Harvey Avenue
Kelowna, BC,
Canada