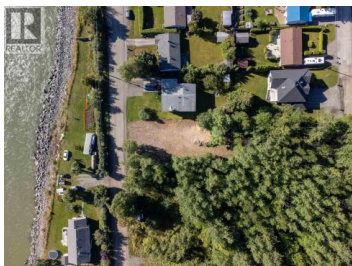




2413 KERR Street Terrace British Columbia

\$125,000



Imagine waking up to the serene whisper of the Skeena River, right at your doorstep-this is your chance to claim a prime 7,900 sqft parcel that's cleared, backfill on site, and primed for immediate construction. Situated on a quiet street and tucked away neighborhood, this exceptional lot faces the majestic Skeena River, potential for stunning river views from the second floor of your custom home or multi-unit build. Zoned R1 and versatile for a single-family residence or up to a four-plex, the possibilities are endless-whether you're envisioning a cozy family haven, an income-generating investment, or something in between. Rest easy knowing it's safely outside the 200-year flood zone, with all essential services (water, gas, and sewer) already paid for. Don't miss out on this hidden gem. (id:6769)

Toni Kelly

RE/MAX Coast Mountains

Phone: (778) 840-9596



RE/MAX Kelowna
100-1553 Harvey Avenue
Kelowna, BC,
Canada