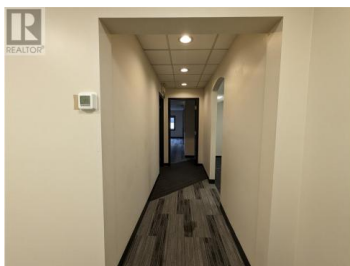
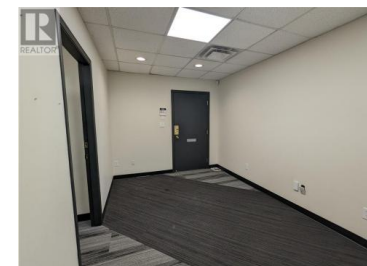




## 1889 Springfield Road 242 Kelowna British Columbia

Springfield/Spall

**\$4,322**



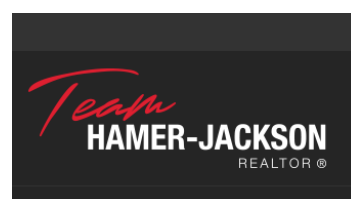
Opportunity to lease 2,161 SF of newly finished, second floor office space within a quiet professional building in Central Kelowna. The unit has several private offices, a large open work area, a reception area, a kitchenette, and storage space. C2 zoning allows for a variety of uses. (id:6769)



### Sol Benson

Venture Realty Corp.

Phone: (250) 317-1077



RE/MAX Kelowna  
100-1553 Harvey Avenue  
Kelowna, BC,  
Canada