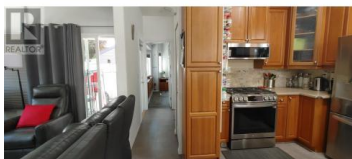


## 415 Commonwealth Road 242 Kelowna British Columbia

Lake Country East / Oyama

# \$370,000



2011 Moduline Park Model with 4 season Okanagan room. This home boasts an open concept design, allowing for natural light and a sun tunnel. Updated 2 years ago are all light fixtures, customs blinds, all appliances, 8 foot metal fence, 8x10 front shed, covered back deck, gazebo, and most of the concrete. Flooring is only 3 years old. Hot Water tank replaced in 2020. This home is very well maintained. Very Private low maintenance yard features 2 sheds, spacious gazebo and totally fenced back yard. Electricity is installed in both sheds and gazebo. With two covered spacious decks provide a cozy spot to relax. With a propane forced air furnace, central A/C and water filtration system. Spacious parking for three vehicles. Located between Kelowna and Vernon in peaceful lifestyle of Holiday Park Resort. Close to Lake Country. Schedule a viewing today. The information contained here in should not be relied upon without independent verification. (id:6769)

### Jeffrey Schall

Oakwyn Realty Okanagan

Phone: (250) 859-7131

<http://www.jeffschallrealty.com/>



RE/MAX Kelowna  
100-1553 Harvey Avenue  
Kelowna, BC,  
Canada