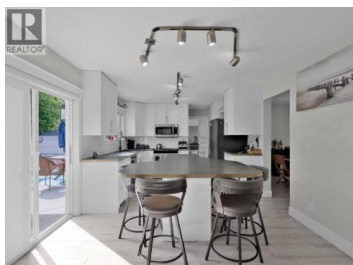
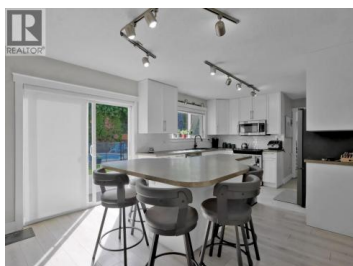
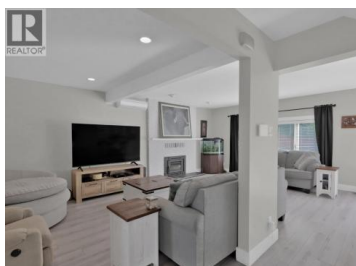




2440 Wiltse Drive Penticton British Columbia

Wiltse/Valleyview

\$999,000



Welcome to this spacious and well-designed 4 bedroom + office, 4-bathroom family home nestled in one of Penticton's most desirable areas. Set on a 0.20-acre lot with a flat back yard, this home offers the perfect blend of functionality and lifestyle. The open-concept layout is ideal for both everyday living and entertaining, featuring a bright and inviting living space that flows effortlessly into the updated kitchen and dining area. Enjoy the comfort of an updated ensuite in the primary suite, as well as the convenience of upstairs laundry. Step outside to your private backyard oasis complete with an in-ground pool with safety fencing, perfect for summer fun! There's plenty of room for toys too--with a large garage, extra storage, and space for your RV or boat. Located within walking distance to Wiltse Elementary School and beautiful hiking trails, this home is perfect for active families. Don't miss your chance to own in one of Penticton's premier neighbourhoods! (id:6769)

Stephanie Erdt

RE/MAX Orchard Country

Phone: (250) 486-8734

<http://www.stephanieerdtr.com>



RE/MAX Kelowna
100-1553 Harvey Avenue
Kelowna, BC,
Canada