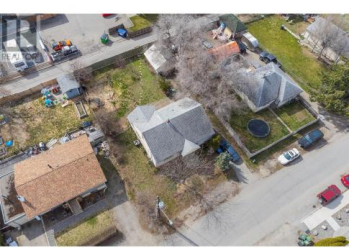




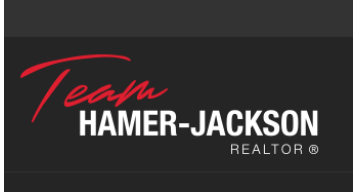
245 Ponto Road Kelowna British Columbia
 Rutland North
\$1,100,000



Land Assembly ---4 Doors ---TRANSIT ORIENTATED DEVELOPMENT---
 potential to build up to 6 stories! WELCOME to Rutland's up-and-coming Urban
 Centre with possible permitted uses including townhouses, stacked
 townhouses, and apartment housing. Home has newer furnace, A/C, and hot
 water on demand, all installed in 2020. New to Rutland? Check out the website:
<https://www.ourrutland.ca> All measurements are approximate (id:6769)



Ruth Lamb
 RE/MAX Kelowna
 Phone: (250) 826-4633
<http://www.kelownahomeseller.ca/>



RE/MAX Kelowna
 100-1553 Harvey Avenue
 Kelowna, BC,
 Canada