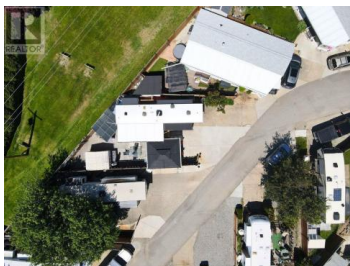


415 Commonwealth Road 248 Kelowna British Columbia

Lake Country East / Oyama

\$195,000



Enjoy low-maintenance living in the heart of the Okanagan! This park model designated site backs onto serene green space – offering the beauty of nature without the upkeep. Just minutes away, the Activity Centre includes an outdoor pool, hot tub, coin laundry, and the charming Blue Schooner Café. Perfect for entertaining, the site features a fully equipped outdoor kitchen, gazebo, and plenty of parking for two vehicles and a golf cart. A short stroll brings you to the Recreation Centre, where you'll find an indoor pool, hot tub, gym, hair salon, and a vibrant calendar of social events. Additional amenities include multiple pools and hot tubs, a pickleball court, woodworking shop, craft room, library, card games, and a fully fenced off-leash dog park. Short-term rentals are allowed, and there's no Property Transfer Tax. The annual maintenance fee is due each January, and the lease extends to 2046 with leasehold interest registered federally. The included 2017 42' Sierra Park Model offers comfortable, year-round living with the Arctic Package and insulated skirting. Inside, enjoy a full kitchen with fridge, stove, and microwave, along with a fireplace, central vac, A/C, skylights, washer/dryer, water softener/filtration system, and window coverings. The gazebo, shed, and outdoor kitchen are all part of the package. Located just a short drive from Kelowna International A...

Petrina Owen

Royal LePage Kelowna

Phone: (250) 826-5660

<http://www.petrina.ca/>



RE/MAX Kelowna
100-1553 Harvey Avenue
Kelowna, BC,
Canada

