

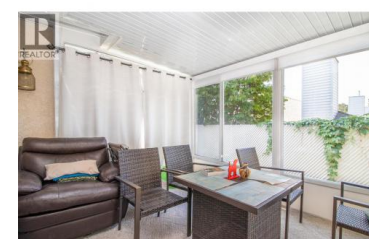
1874 Parkview Crescent 25 Kelowna British Columbia

Springfield/Spall

\$674,800



Rarely available spacious townhome; 3 beds plus den; 2 baths; wide open living room; dining room that leads out to custom sunroom; lower level boasts 3rd bedroom, full bath plus large family room; separate laundry on both levels; This end unit is located in super central location, short walk to mission greenway with shopping and amenities nearby. (id:6769)



Mark Jontz

Royal LePage Kelowna

Phone: (250) 861-6002

<http://www.markjontz.com/>



RE/MAX Kelowna
100-1553 Harvey Avenue
Kelowna, BC,
Canada