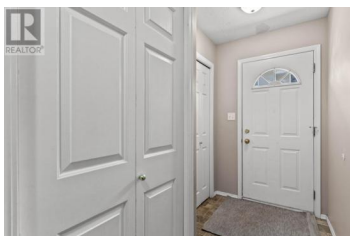




1920 HUGH ALLAN Drive 25 Kamloops British Columbia

Pineview Valley

\$479,900



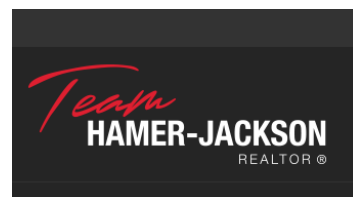
Who's ready for their next chapter in Pineview Heights? 25-1920 Hugh Allan Drive A 2-storey designed townhome offering a thoughtful three-level layout with room to grow. The ground floor features a large foyer, office or flex space, laundry area, and single-car garage with extra storage. The main floor showcases an open kitchen, dining and living space, plus a 2-piece guest bath and access to your private backyard. Upstairs, three bedrooms and a full bath offer a quiet retreat away from main living areas. With an exterior parking stall included, this home provides both functionality and flexibility. Located steps from a large city-maintained park and nearly direct transit to TRU, Pineview Heights offers the privacy of a natural setting with city convenience. The roof levy has already been fully paid by the seller, making this one of Kamloops' best all-around values. (id:6769)

David Lawrence

Royal LePage Westwin Realty

Phone: (250) 374-1461

<https://www.kamloopsrealestateagent.com/>



RE/MAX Kelowna
100-1553 Harvey Avenue
Kelowna, BC,
Canada