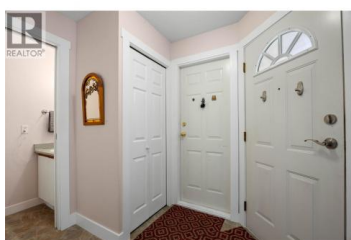




## 2020 ROBSON Place 25 Kamloops British Columbia

Sahali

**\$480,000**



Welcome to this bright three-level townhouse that blends flexible living with excellent indoor/outdoor flow, featuring an attached single garage plus an extra parking stall beside the garage. The main floor welcomes with a convenient half bath off the entry, a functional kitchen with pass through to the bright dining room, and direct access to the rear balcony—ideal for BBQs and easy entertaining. Upstairs, there is a large primary bedroom with a walk-in closet. Two additional bedrooms that can suit guests, kids, or a home office, all sharing a well-appointed full bathroom. The lower level adds a spacious rec/family room that also opens to the back common area, creating a great zone for movie nights, workouts, or play. With the privacy of three distinct levels, everyday convenience, and proximity to shopping, schools, TRU, transit, parks, and trail networks, this Sahali home offers a versatile layout and the lifestyle benefits of a central location. Call today to book your viewing! All measurements are approximate and should be verified by the buyer. (id:6769)

**Sanja Rodger**

Royal LePage Westwin Realty

Phone: (250) 299-2523



**RE/MAX Kelowna**  
100-1553 Harvey Avenue  
Kelowna, BC,  
Canada