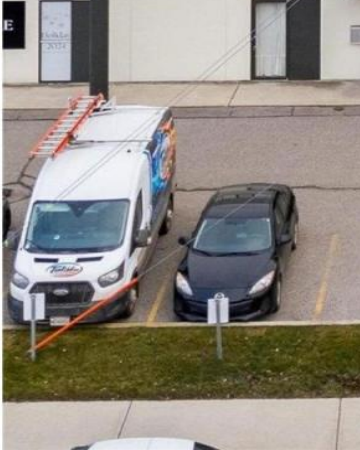




1751 Harvey Avenue 250 Kelowna British Columbia
 Springfield/Spall
\$1,700

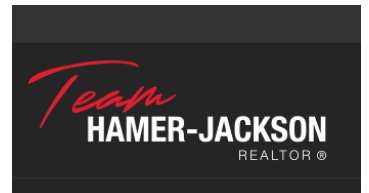


This mixed-use property features 776 sq. ft. on 2nd floor office/retail space suitable for various professional uses and direct access from the rear laneway. The unit was previously used as nail spa and have water sink. Situated in the highly desirable Landmark District, the property provides one dedicated on-site parking stalls (could be possibly 2 with additional cost), excellent signage opportunities, and exposure along a high-traffic corridor. The building is currently occupied by professional tenants and benefits from its central location with convenient access to Highway 97 and Springfield Road. The premises are available immediately. Gross rent includes power, water and gas. (id:6769)

Gary Judge

Realtymonx

Phone: (250) 899-3101



RE/MAX Kelowna
 100-1553 Harvey Avenue
 Kelowna, BC,
 Canada