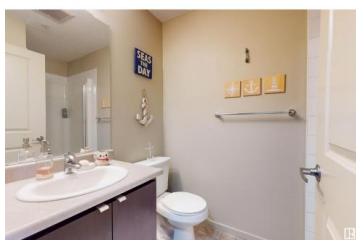


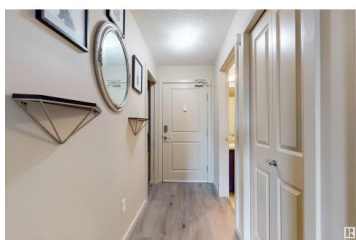
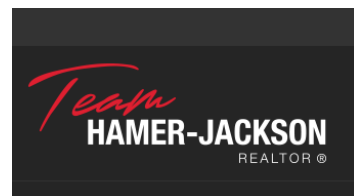
Welcome to this well-kept 709 sq ft one-bedroom apartment with a versatile den that can be used as an office or guest room. Featuring two full bathrooms, this unit is designed for comfort and convenience. Enjoy breathtaking river valley views from your living space, providing a tranquil setting in the heart of the city. Walking distance to the Rundle Park. Located close to schools, shopping, dining, and all amenities, with easy access to public transportation, this apartment offers the perfect blend of urban living and natural beauty. Move-in ready and waiting for you to call it home. (id:6769)



Yogesh Bharmota

RE/MAX Elite

Phone: (587) 589-0777



RE/MAX Kelowna
100-1553 Harvey Avenue
Kelowna, BC,
Canada