

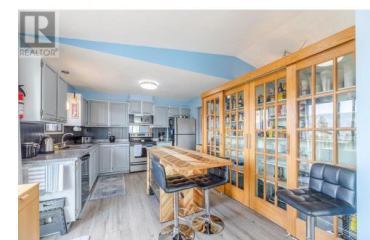
2513 Dartmouth Drive Penticton British Columbia

Wiltse/Valleyview

\$759,000



NOT A DRIVE-BY. This is a MUST SEE home in the desirable family oriented Wiltse neighborhood, just 2 mins. to one of Penticton's best schools, 7 mins to downtown shopping and restaurants, and less than 10 minutes to either Skaha or Okanagan Lakes, beaches and marinas. An immaculate rancher with fully finished lower walk-out level is perfect for your family, your guests and in-laws, or future potential for a rental suite for extra revenue with its on entrance. Main level entry to spacious open concept living & dining with electric fireplace & vaulted ceilings, country kitchen with mountain views, large primary bedroom & 2 extra bedrooms, along with a 5 pc bathroom easily accommodates the whole family! Enjoy evening mountain sunsets from your upper deck with your favorite beverage. For recreation and relaxing, enjoy an extraordinary lower level living area with cozy wood burning fireplace & french doors opening to a beautifully landscaped private large covered deck & gazebo area, perfect for entertaining. An upscale 3 pc bath, another bedroom & den, 2 storage areas and laundry providing ample room for all your belongings and guests. If you want the extra revenue, this area could be converted into an income producing suite. There is an 8x8x20 shop for the handy or crafty member of the family and extra parking on the side of the home for boat storage. This one will ...



Randal Quesnelle

Skaha Realty Group Inc.

Phone: (250) 462-3323



RE/MAX Kelowna
100-1553 Harvey Avenue
Kelowna, BC,
Canada

