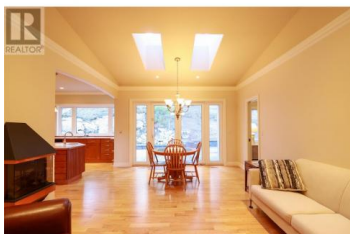
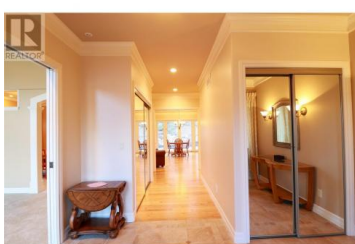




## 2514 EVERGREEN Drive Penticton British Columbia

Wiltse/Valleyview

**\$999,900**



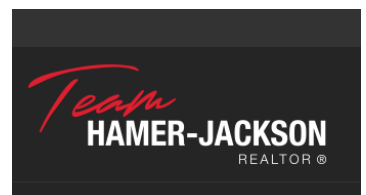
Introducing a meticulously crafted rancher designed by Jenish, nestled in the heart of one of Penticton's most desirable neighbourhoods. This thoughtfully planned residence features an expansive kitchen, ideal for culinary enthusiasts and hosting gatherings. Discover multiple living spaces, including a formal dining room and cozy family room, offering versatility for everyday living and entertaining. The master suite, adorned with ample windows, grants access to a private patio, creating a serene retreat for relaxation. Guests will appreciate the comfort of the spacious second bedroom. Architectural details such as vaulted ceilings, crown moldings, and EuroLine windows and doors add timeless elegance to the home. Step outside to the tranquil east-facing private patio, enhanced by a charming water feature and pond, where you can unwind and enjoy summer evenings. Experience the epitome of easy living in this meticulously appointed home. (id:6769)

**Chris Marte**

eXp Realty

Phone: (250) 809-4614

<http://www.maapgroup.com/>



**RE/MAX Kelowna**  
100-1553 Harvey Avenue  
Kelowna, BC,  
Canada