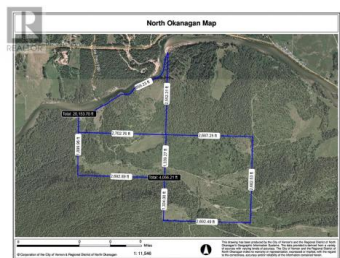


2524 Enderby Mabel Lake Road Enderby British Columbia

Enderby / Grindrod

\$849,900



Nestled within the breathtaking beauty of 305 acres, this extraordinary property offers a rare opportunity to embrace off-grid living at its finest. Comprising three separate titles, contact the municipality for the possibility to build 2 homes per Title. You'll find approx. 1 kilometer of pristine Shuswap River frontage awaiting your enjoyment. Whether you dream of homesteading, farming, or simply retreating to your own private paradise, this property has it all. Discover a rustic cabin, with a concrete foundation. With an existing septic system in place, all that's needed to complete this haven is a water source and a touch of TLC. Surrounded by two expansive grazing meadows with views of the Mabel Lake Valley and its picturesque hills, every aspect of this property is designed to inspire awe. Embrace the freedom to hunt, fish, or simply relax amidst the tranquility of nature, with the renowned Hidden Lake fishing area just moments away. While seclusion is assured, access is from Enderby, take Mable Lake Rd past Ashton Creek store, road forks to the right onto Trinity Valley Rd . Drive a few minutes until you turn left onto Hidden lake rd. Set odometer to 0. At 10.5 km. There are forestry km markers. Turn left after the 10 km forestry marker (sign). There will be a fork in the road; stay to the left and drive 4.7 km. You will find a locked gate, accessible with the realtor...



RE/MAX Kelowna
100-1553 Harvey Avenue
Kelowna, BC,
Canada

Nathan Sulz

eXp Realty (Kelowna)

Phone: (778) 212-0868

<https://nathansulz.com/>

