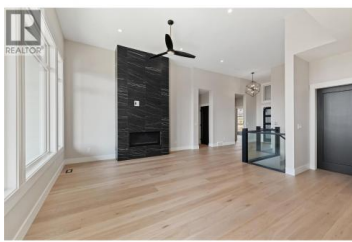




2531 Pinnacle Ridge Drive West Kelowna British Columbia

Shannon Lake

\$1,498,000



Stunning lakeview walkout rancher offering 5 bedrooms, 4 bathrooms, and 3,045 sq. ft. of beautifully designed living space on a rare, flat and fully usable 0.19-acre lot. Enjoy breathtaking views of Okanagan Lake from the bright, open-concept main floor featuring a spacious great room, generous dining area, and a chef-inspired kitchen complete with an oversized island--perfect for entertaining and family living. The primary suite is a private retreat with lake views, direct deck access, and a luxurious ensuite showcasing a soaker tub, walk-in shower, double vanity, and walk-in closet. The fully finished walkout basement offers excellent flexibility with two additional bedrooms, a full bathroom, a large recreation area with backyard access, plus a fully self-contained 1-bedroom legal suite--ideal for extended family or mortgage helper. The 21' x 22' garage is complemented by ample additional parking for up to four vehicles, including space for an RV or trailer. A rare opportunity to own a new home with lake views, a flat yard, and income potential, all in a sought-after, family-friendly neighbourhood close to schools, golf, parks, trails, and everyday amenities. (id:6769)

Ryan Mayne

RE/MAX Kelowna

Phone: (250) 469-4004

<http://www.pwrg.ca/>



RE/MAX Kelowna
 100-1553 Harvey Avenue
 Kelowna, BC,
 Canada

