

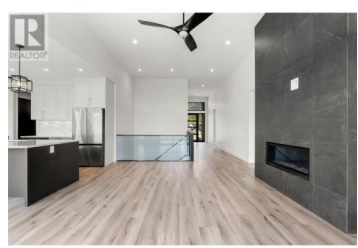
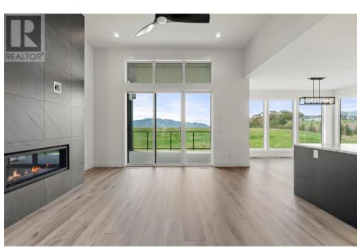
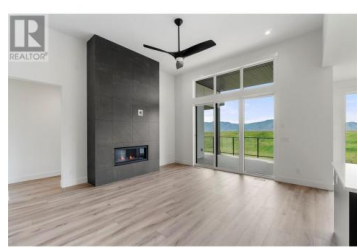
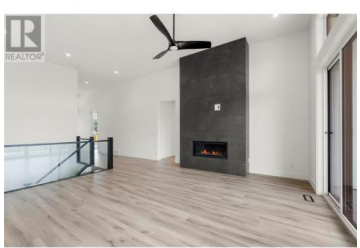
## 2537 Pinnacle Ridge Drive West Kelowna British Columbia

Shannon Lake

# \$1,349,000



Join the fabulous family community at Tallus Ridge! This exquisite 3,427 square foot home is perfectly designed for modern family living, featuring an abundance of natural light through numerous windows and an open floor plan that seamlessly connects the great room to the dining and kitchen areas. The kitchen boasts a large island ideal for family gatherings, while the combined mudroom, pantry, and laundry room offer convenience and ample storage. The luxurious primary suite, with access to the back deck, includes an oversized shower, soaker tub, double vanity, water closet, and a spacious walk-in closet. Two additional bedrooms and a full bathroom complete the main level. The versatile lower level features a large recreation room with backyard access, two more bedrooms, a bathroom, and a 1-bedroom suite, perfect for extended family or rental income. Don't miss your chance to join the vibrant Tallus Ridge community and experience the perfect blend of elegance, functionality, and comfort in this stunning home. Contact us today to schedule a private tour and make this incredible property yours! (id:6769)

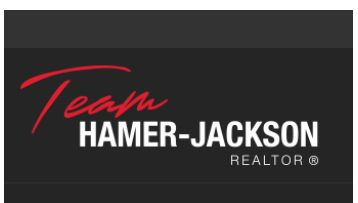


**Ryan Mayne**

RE/MAX Kelowna

Phone: (250) 860-0303

<http://www.pwrg.ca/>



**RE/MAX Kelowna**  
 100-1553 Harvey Avenue  
 Kelowna, BC,  
 Canada