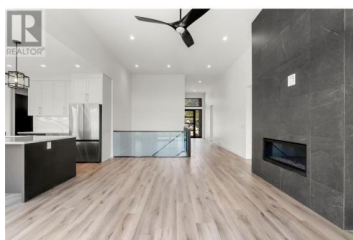


2537 Pinnacle Ridge Drive West Kelowna British Columbia

Shannon Lake

\$1,349,000



Tallus Ridge invites you to join its fabulous family community. This exquisite 3,427 square foot home, bathed in natural light, is the epitome of modern family living. Its open floor plan seamlessly connects the great room, dining area, and kitchen, creating a spacious and inviting atmosphere. The kitchen's large island is perfect for family gatherings, while the combined mudroom, pantry, and laundry room offer both convenience and ample storage. The luxurious primary suite, with access to the back deck, features an oversized shower, soaker tub, double vanity, water closet, and a spacious walk-in closet. Two additional bedrooms and a full bathroom complete the main level. The versatile lower level boasts a large recreation room with backyard access, two more bedrooms, a bathroom, and a one-bedroom suite ideal for extended family or rental income. Don't miss this opportunity to experience the perfect blend of elegance, functionality, and comfort in this stunning home within the vibrant Tallus Ridge community. (id:6769)

Ryan Mayne

RE/MAX Kelowna

Phone: (250) 860-0303

<http://www.pwrg.ca/>



RE/MAX Kelowna
100-1553 Harvey Avenue
Kelowna, BC,
Canada