



2538 Pinnacle Ridge Drive West Kelowna British Columbia

Shannon Lake

\$1,399,900



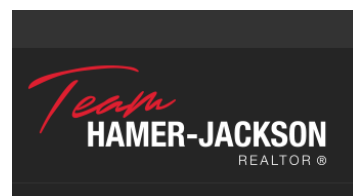
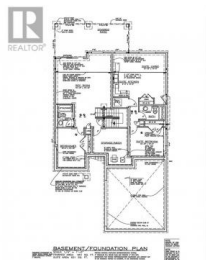
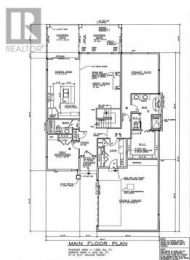
Introducing your dream home in the heart of Tallus Ridge! This stunning new build offers a modern rancher-style layout with a walkout basement, perfectly blending comfort and functionality. With 4 spacious bedrooms, including a 1-bedroom legal suite ideal for rental income or extended family, this home caters to every lifestyle. Enjoy peaceful views as the property backs onto a serene vineyard, providing privacy and a picturesque backdrop. Relax or entertain year-round on the covered deck and patio, and explore miles of nearby walking trails. Nestled in a safe and welcoming family-friendly community, this home is the perfect place to plant roots. Close to schools and amenities. (id:6769)

Ryan Mayne

RE/MAX Kelowna

Phone: (250) 469-4004

<http://www.pwrg.ca/>



RE/MAX Kelowna
100-1553 Harvey Avenue
Kelowna, BC,
Canada