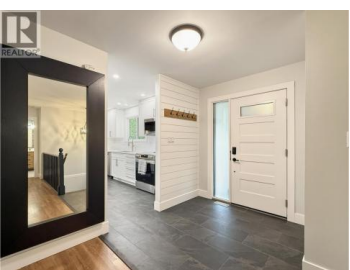


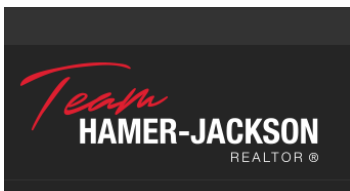


**2555 WALLACE Place Prince George British Columbia**  
**\$625,000**



Hart Highlands rancher on a private treed lot that feels like your own forest -- valley views, updated throughout & a mortgage-helper suite. 3 BR (2+1), 2 BA walkout w/ unauthorized 1 BR suite on a 0.61-ac pie-shaped cul-de-sac lot. Open-concept kitchen, living & dining flow onto the south-facing deck w/ valley & sunset views; clear cedar ceiling retained. 2024 designer kitchen: quartz counters, entertaining peninsula & new stainless appliances. Major updates: roof & kitchen 2024, HE furnace, main floor interior doors & entry door 2025, 200A electrical 2023, main bath & windows 2022 (SGDs previously updated). Suite: private entry, covered patio, kitchen & 3-pc bath (2023). Oversized dbl garage + 4-car driveway. 1.3 km to Hart Ski Hill, steps to Pidherny trails. Rare lot. (id:6769)

**Chris Fancy**  
 Royal LePage Aspire Realty  
 Phone: (250) 961-0688  
<http://chrisfancy.com/>



**RE/MAX Kelowna**  
 100-1553 Harvey Avenue  
 Kelowna, BC,  
 Canada