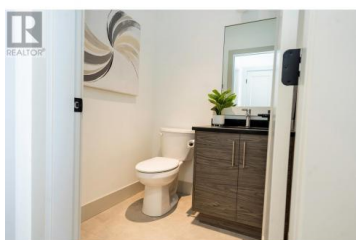




255B Grizzly Ridge Trail Big White British Columbia

Big White

\$1,399,900



Luxury at Grizzly Ridge Estates! You will absolutely fall in love with this home; from the beautiful finishes throughout, the thoughtfully designed floor plan, to the breathtaking, unobstructed, panoramic views of the Monashee Mountains - this brand new home has it all! The main level features a professionally designed gourmet kitchen, large living room with stone fireplace and vaulted ceilings, spacious dining room, plus access to the covered deck, which is an ideal place to soak in the views from the included hot tub after a long day on the slopes. Down one level you will find 3 bedrooms including the master suite with 4 piece ensuite bath and walk in closet, an additional full bathroom for your kids or guests, plus laundry room. Below this level is a walkout sub-basement with another master suite with ensuite, plus large rec room with wet bar and another fireplace, an additional full bathroom, and small patio. You're getting a brand new, professionally designed, fully warranted home with over 2,900 finished square feet, 4 bedrooms, 4.5 bathrooms, a 480 sqft double garage, additional driveway parking, and some of the most stunning panoramic views to be had at Big White! 2 pets allowed, no rental restrictions, low strata fees, all appliances, and a private hot tub!! Fully Finished and Ready for Immediate Possession!! (id:6769)

Brendan Stoneman

RE/MAX Kelowna

Phone: (250) 864-0808

<http://www.brendanstoneman.com/>



RE/MAX Kelowna
 100-1553 Harvey Avenue
 Kelowna, BC,
 Canada

