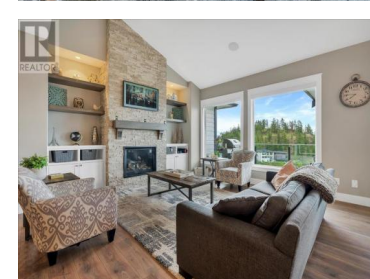
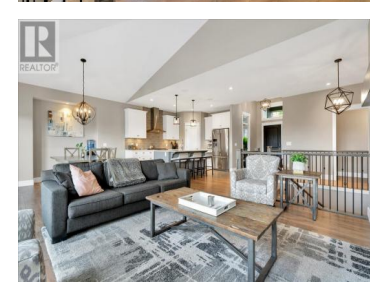
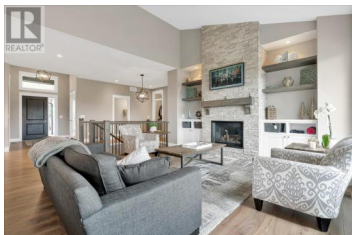
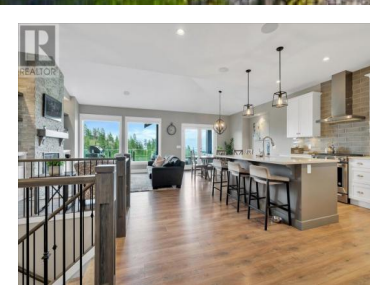




2565 Crown Crest Drive West Kelowna British Columbia

Shannon Lake

\$1,324,000



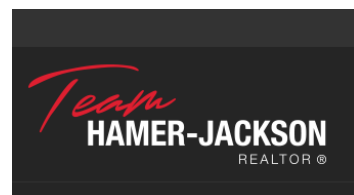
Welcome to the lakeview family home in the highly desirable Tallus Ridge neighborhood. This rancher home is perfectly located near schools, parks, walking trails, and the Shannon Lake Golf Course. It features a walkout basement with breathtaking views of the vineyard, Okanagan Lake, and Okanagan Mountain Park. The open great room design allows for stunning lake views from all living spaces, making it ideal for family gatherings or entertaining. This area boasts a cozy fireplace surrounded by floor-to-ceiling stone and vaulted ceilings. The spacious kitchen includes a large work/seating island and a dining area that opens onto a semi-covered deck with glass railings, perfect for taking in the views. The main level also features an office and a powder room. The fully finished lower level offers a large rec room, three bedrooms, and two full bathrooms, providing ample space for the family. Additional conveniences include a fenced backyard, a triple garage, and oversized parking. (id:6769)

Ryan Mayne

RE/MAX Kelowna

Phone: (250) 860-0303

<http://www.pwrg.ca/>



RE/MAX Kelowna
100-1553 Harvey Avenue
Kelowna, BC,
Canada