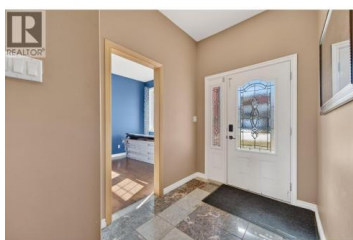




## 2620 Telford Drive Kamloops British Columbia

Aberdeen

# \$1,149,900



Located on one of the nicest streets in Kamloops with exceptional panoramic views, this fantastic family home offers space, flexibility and a rare lot that is hard to find in Aberdeen. Built in 2008, the home sits on a large, flat and fully usable backyard with side access, creating a great space for kids, pets, gardening or future plans. The main floor offers bright and functional living space designed for everyday family life. Upstairs you will find four bedrooms, including a spacious primary suite with a large ensuite, walk-in closet and its own private deck where you can relax and take in the incredible views of the city and surrounding hills. Downstairs, the unfinished daylight basement with suspended slab offers excellent potential to expand your living space. Whether you are dreaming of a large rec room, home gym, additional bedrooms or exploring the possibility of a future suite, there is plenty of room to make it your own. Homes on streets like this rarely come available, especially with a lot this usable and views this impressive. Located in one of Aberdeen's most desirable family neighbourhoods, close to parks, trails and everyday amenities, this is a great opportunity to create something special for years to come. Quick Possession Possible. (id:6769)

### Amanda Mitchell

Royal LePage Westwin Realty

Phone: (250) 319-4165

<http://www.livekamloops.com/>



**RE/MAX Kelowna**  
 100-1553 Harvey Avenue  
 Kelowna, BC,  
 Canada

