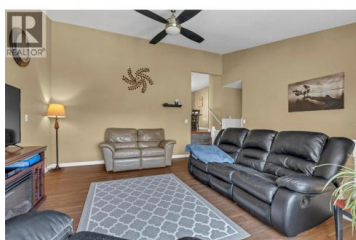
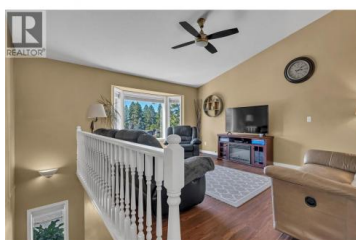




## 2686 Evergreen Drive Penticton British Columbia

Wiltse/Valleyview

**\$825,000**



The perfect family home in a peaceful neighborhood! This beautiful home offers a bright, open layout with natural light throughout, ideal for everyday living and entertaining. The spacious kitchen features a cozy eating area with access to a private, shaded deck, perfect for family BBQs. Upgrades to mention include a new roof (2018), furnace/AC (2023), flooring throughout, and beautiful exterior paint. The primary suite includes a full ensuite and sliding doors to the deck, ready for a future hot tub. Backing onto a spacious natural hillside, you'll love the added room for kids to explore and your own private access to Wiltse Trails. The large attached double garage has an awesome bonus room and office above it and below still provides plenty of space for vehicles, bikes, a workshop and all the gear that comes with family life. Call today to book your viewing or for an info package. (id:6769)

### Shelly Weinrich

Royal LePage Locations West

Phone: (250) 488-4247

<http://www.jeanandshelly.com/>



**RE/MAX Kelowna**  
100-1553 Harvey Avenue  
Kelowna, BC,  
Canada