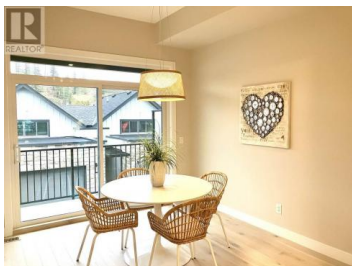




## 1550 Union Road 27 Kelowna British Columbia

Wilden

**\$769,900**



For more information please click the Brochure button below. Pondsides Landing now selling. A new 61-unit townhome project in Wilden. All units in phase 1 are move in ready! Sizes ranging from 1500 sq.ft to over 2700 sq. Two different unit types offering 3 bedrooms and 3 baths of unique modern urban living in the heart of Wilden. Juniper units starting at \$769,900 plus GST and all have roof top terraces starting at over 330 sq.ft. Elderberry units starting at \$1,149,900 plus GST and are located along the shoreline of Still Pond. Desirable pond location a stone's throw away from walking trails, neighborhood parks and the future home to Wilden's Market Square and Wilden Elementary. All models offer 2 car garages, outdoor living space, plenty of storage and fully landscaped grounds with viewing area. Actual floorplan is reversed for this unit. Only a 5% deposit and the rest paid on completion. (id:6769)

**Darya Pfund**

Easy List Realty

Phone: (888) 323-1998

<http://www.easylirealty.ca/>



**RE/MAX Kelowna**  
100-1553 Harvey Avenue  
Kelowna, BC,  
Canada