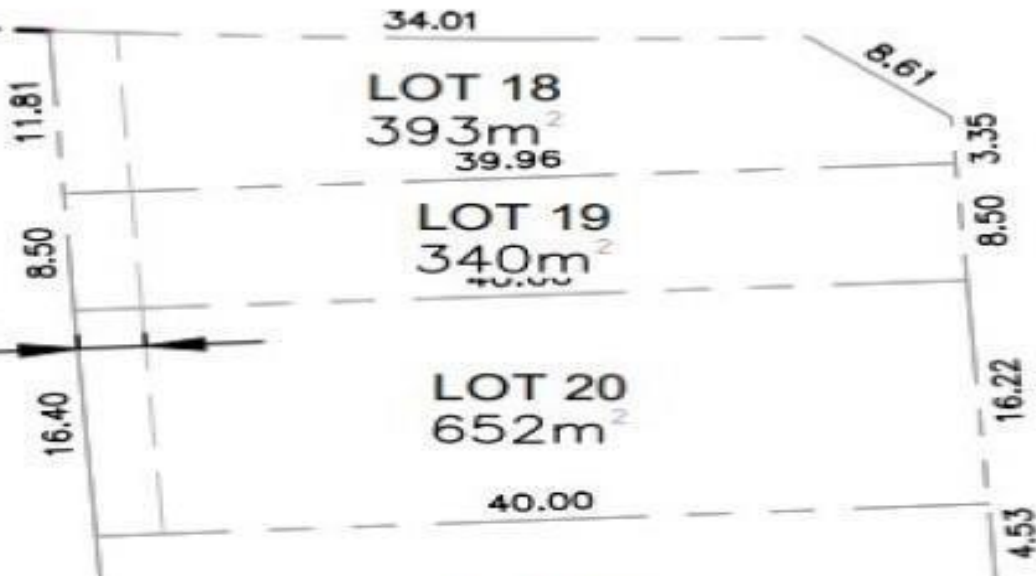




DRAINAGE  
EMENT



**2704 EDGEWATER Crescent Prince George British Columbia**  
**\$150,000**

DEDICATION

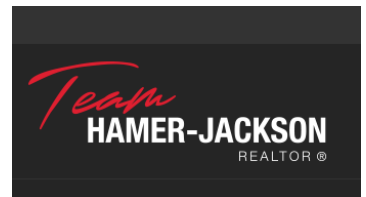


Truly one of the nicest subdivisions in Prince George. Close to Edgewood Elementry School and the Nechako River. The central location makes it close to all amenities. (id:6769)

**Darcy Porsnuk**

Royal LePage Aspire Realty

Phone: (250) 565-5036



**RE/MAX Kelowna**  
 100-1553 Harvey Avenue  
 Kelowna, BC,  
 Canada