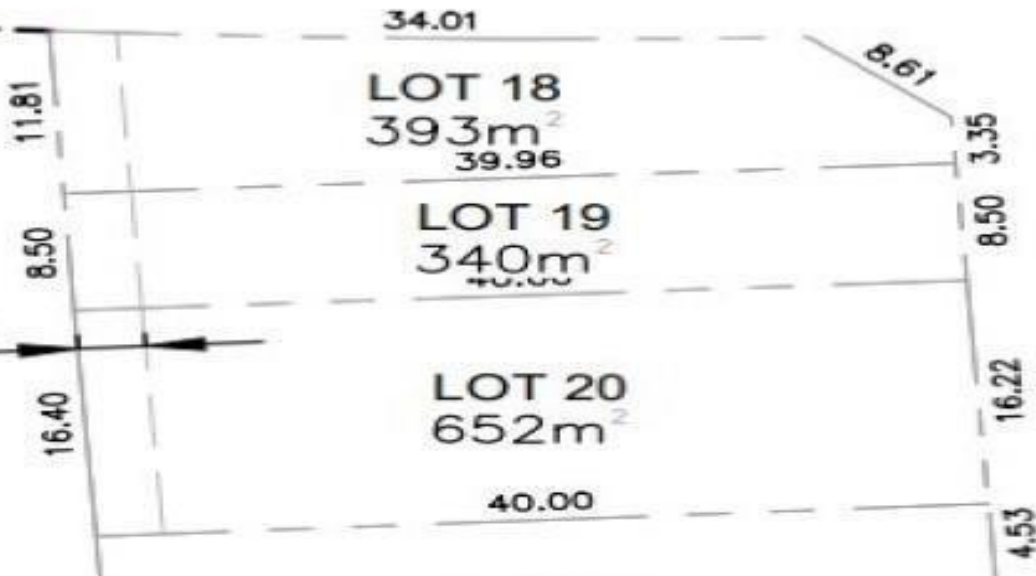




DRAINAGE
EMENT



2716 EDGEWATER Crescent Prince George British Columbia
\$140,000

DEDICATION

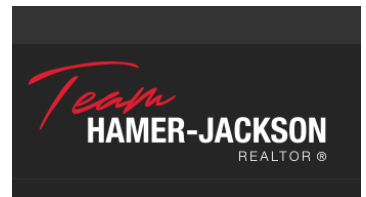


Truly one of the nicest subdivisions in Prince George. Close to Edgewood Elementry School and the Nechako River. The central location makes it close to all amenities. (id:6769)

Darcy Porsnuk

Royal LePage Aspire Realty

Phone: (250) 565-5036



RE/MAX Kelowna
 100-1553 Harvey Avenue
 Kelowna, BC,
 Canada