



## 2724 Dafeo Place Penticton British Columbia

Wiltse/Valleyview

# \$899,000



This well-kept home offers space, comfort, and excellent income potential. The main floor features 3 spacious bedrooms, 1.5 bathrooms, a bright living area with beautiful views, and a large kitchen with plenty of cabinet and counter space. The fully finished basement includes 2 additional bedrooms, 1 full bathroom, and a separate entrance -- ideal for an in-law suite or potential mortgage helper. Outside, enjoy a large backyard perfect for kids, pets, or entertaining, along with a spacious double-car garage. Located in a quiet, family-friendly neighborhood close to schools, parks, shopping, and amenities, this property is a great opportunity for families or investors alike. (id:6769)

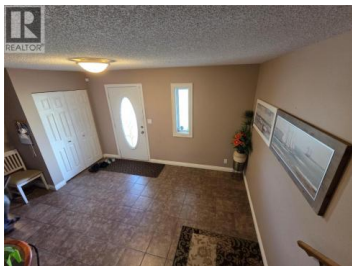
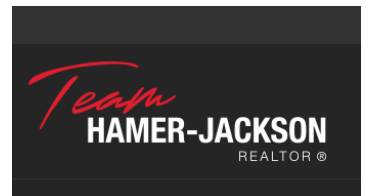


### JB Bansoota

RE/MAX Wine Capital Realty

Phone: (250) 486-6339

<http://www.wesellpenticton.com/>



RE/MAX Kelowna  
100-1553 Harvey Avenue  
Kelowna, BC,  
Canada