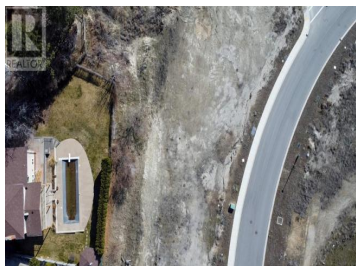


## 2730 Dartmouth Drive Penticton British Columbia

Wiltse/Valleyview

**\$399,000**



Welcome to 2730 Dartmouth Drive, where your dream home could become a reality on Lot 6! Nestled within a serene cul-de-sac, this level plot features minimal neighboring homes, picturesque surroundings, and captivating lake vistas. Its strategic location is second to none, with all amenities within reach and public transportation nearby for fuss-free commuting. Smooth, well-kept roads guarantee a tranquil and safe community, ideal for those yearning for a calm lifestyle. Education is at your doorstep, with Wiltse Elementary and Princess Margaret Secondary School nearby. Outdoor adventure seekers will rejoice with Skaha Bluffs North parking just a 3-minute drive away, inviting residents and visitors to enjoy hiking and climbing activities. Leave behind the fast-paced life of downtown Penticton and immerse yourself in the awe-inspiring views of the mountains and the lake. Please bring your favorite builder or let us suggest one to lighten your load. Don't let this precious opportunity slip away, with its unbeatable location and stunning vistas. Start building the home of your dreams today! (id:6769)

**Scott Bowland**

eXp Realty - Skaha

Phone: (250) 462-2274

<http://www.mypropertycentral.ca/>



**RE/MAX Kelowna**  
100-1553 Harvey Avenue  
Kelowna, BC,  
Canada

