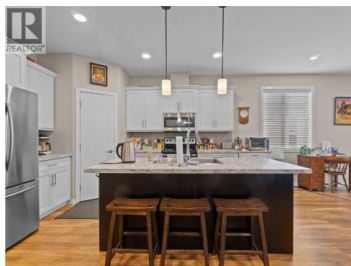
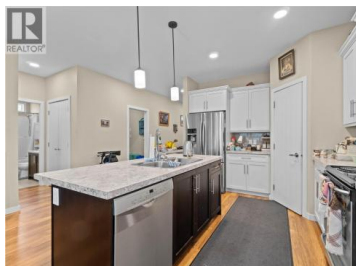


1611 10 Street 28 Salmon Arm British Columbia

SW Salmon Arm

\$624,900



Situated in the desirable Hopkins Meadow development, this 2 bedroom + den, 2 bathroom home offers comfortable living in a 55+ bare land strata community. Built in 2016 and thoughtfully designed, this home has been very well cared for and offers a bright, functional layout. The spacious kitchen features stainless steel appliances, a large island, and pantry storage, flowing seamlessly into the open dining and living areas. Direct access to the covered back patio from your living room through a sliding door, perfect for relaxing or entertaining year-round. The primary bedroom includes a walk-in closet and private ensuite, while the second bedroom and den provide flexible space for guests, hobbies, or a home office. Enjoy outdoor living with both a welcoming front patio and a large patio at the back of the home, both covered for extended use. The property also offers a single garage plus a spacious driveway for additional parking. Ideally located within walking distance to Piccadilly Mall, grocery shopping, Canadian Tire, and other everyday amenities, this home combines comfort, convenience, and easy living in one of Salmon Arm's sought-after adult communities. (id:6769)

Jeff Stacer

RE/MAX Shuswap Realty

Phone: (250) 832-1390

<http://www.stacerteam.com/>



RE/MAX Kelowna
 100-1553 Harvey Avenue
 Kelowna, BC,
 Canada

