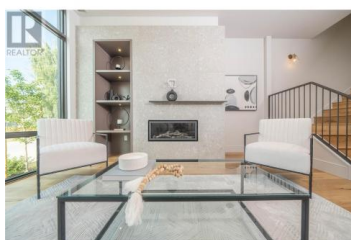
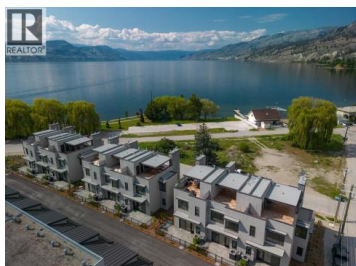


280 Anna Avenue Naramata British Columbia

Naramata Village

\$1,350,000



Welcome to Anna Avenue. This incredible home offers 2847 SqFt of indoor/outdoor living! Located in the heart of Naramata in pristine Okanagan Wine Country, this brand new boutique lakeside rowhome offers outstanding views, spectacular outdoor space, modern and luxurious interiors, and carefree walkability. The spacious 3 bedroom floor plan provides a house feel and is designed for entertaining. Main floor features 10' ceilings, massive windows, a chef's kitchen with 5-person breakfast bar, dining area, open living room, cozy gas fireplace with custom mantle and millwork, mudroom & guest bath. The primary bedroom has a spa-like ensuite, walk-in closet, and overlooks the lake. The expansive roof deck is a true highlight, with striking sunset views, lpe wood deck, outdoor kitchen, gas fireplace, and two infrared heaters. Rough-ins for optional hot tub and solar panels as well as the ability to add a private elevator. Huge usable crawl space for extra storage. 2 car garage, can be equipped with storage loft or car lift. Walking distance to world class wineries and restaurants, with amazing mountain biking, water sports, and skiing within close proximity. (id:6769)

Jodie Graham

Stilhavn Real Estate Services

Phone: (604) 727-5150

<http://jodiegraham.com/>



RE/MAX Kelowna
100-1553 Harvey Avenue
Kelowna, BC,
Canada

