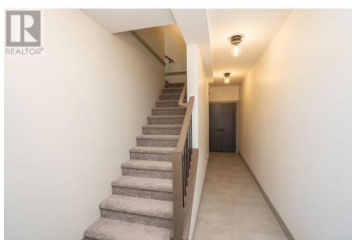




280A Grizzly Ridge Trail Big White British Columbia

Big White

\$999,900



Ready to move in now! You're getting a brand new, professionally designed, semi detached, fully warranted, 2,000+ sq ft. home with Mountain vistas. Easy ski in/ski out access to the SERWA Run nearby, a short 12 minute walk to all the Village amenities. The main floor of the home features an open, entertainer's floor plan, a beautiful kitchen boasting 5 piece upgraded stainless steel appliances and granite countertops, with an impressive stone fireplace in the living room. Off the kitchen is a large, covered balcony, the perfect spot to add a hot tub for those long post-ski soaks!. There are 3 spacious bedrooms, 3 full & 1 half bathrooms. The master suite features a walk-in closet and full 5 piece ensuite bathroom. If extra storage is on your wish list, we have that too! This unit has a triple car garage, so lots of room for all of your toys, and your driveway shoveling is all taken care of! 2 pets allowed, and no rental restrictions here, low strata fees, all appliances and Central Vac included! Check out the 360 Tour to see a similar unit. Fully Finished and Ready for Immediate Possession!! New Property Transfer Tax rules may allow you to avoid the tax, and there are no short term rental restrictions, speculation tax, or foreign buyer bans here!! (id:6769)

Brendan Stoneman

RE/MAX Kelowna

Phone: (250) 864-0808

<http://www.brendanstoneman.com/>



RE/MAX Kelowna
 100-1553 Harvey Avenue
 Kelowna, BC,
 Canada

