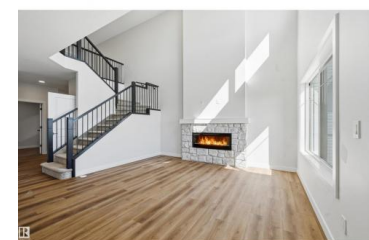
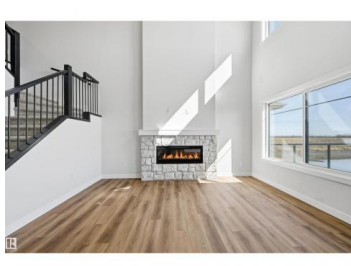
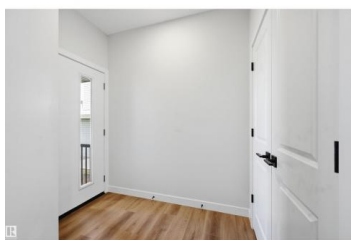
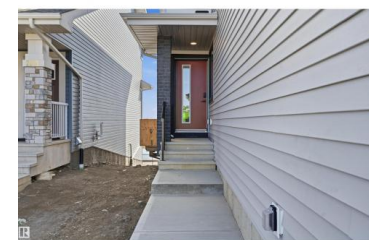




Edmonton Alberta

The Uplands

\$714,900



Welcome to this stunning brand new Landmark Homes THE EIFFEL 2 Storey with a WALKOUT basement perfectly situated in a great location, BACKING onto a walkway and pond. Designed with modern living in mind, this bright and spacious home features an impressive open-to-above living room that fills the space with natural light and creates a grand, airy feel. The chef in the family will love the kitchen and dining area, perfect for entertaining. The MAIN FLOOR also includes a convenient BEDROOM and full bathroom, ideal for guests, extended family, or a home office. Upstairs, you'll find a large bonus room and three generously sized bedrooms, providing plenty of room for the whole family. The thoughtful layout blends comfort and functionality throughout. A separate side entry offers excellent potential for a future walk-out basement development. This home combines style, space, and an unbeatable setting. Don't miss seeing this home! (id:6769)

Alan H. Gee

RE/MAX Elite

Phone: (780) 498-2187

<http://www.alangee.com/>



RE/MAX Kelowna
100-1553 Harvey Avenue
Kelowna, BC,
Canada