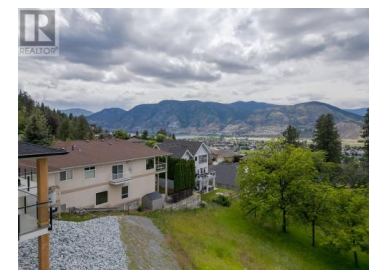




2831 Evergreen Drive Penticton British Columbia

Wiltse/Valleyview

\$440,000



This breath-taking view can be yours! Located in the desirable Wiltse area of Penticton, this lot has an east to west exposure and will have STUNNING sunset views of the City, the mountains and Okanagan Lake from the upper and lower patios. This lot is fully serviced including City water, municipal sewer, power and natural gas. Bring your own design or take advantage of the plans already prepared specifically for this lot. Plans offered with sale include a level entry rancher with complete main level living and a walk out basement, 3 bedrooms with 2.5 bathrooms and of course a fabulous covered deck space on the upper and lower floors. Make this your next forever home! (id:6769)

Dawn Ford

Royal LePage Locations West

Phone: (250) 486-5373



RE/MAX Kelowna
100-1553 Harvey Avenue
Kelowna, BC,
Canada