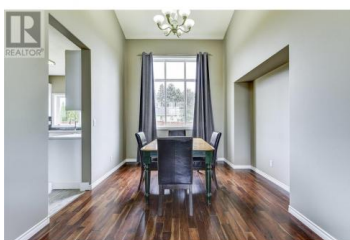


285 Murray Crescent Rutland British Columbia

Rutland North

\$829,900



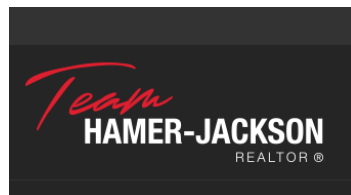
Welcome to this charming, well-maintained family home in this peaceful neighbourhood of North Rutland, perfect for families or individuals seeking a quiet, welcoming community. This home features four spacious bedrooms with large windows that provide natural light and 3 bathrooms inc a large primary ensuite. The open-concept living and dining area is ideal for large family entertaining, complete with beautiful hardwood floors and a cozy fireplace. The kitchen offers modern appliances, ample counter space, and patio doors that overlook the lush pool-sized backyard. Outside, the property boasts a landscaped front yard, a private fully fenced backyard with a patio for outdoor gatherings, and an attached double-car garage with plenty of storage space. Located close to schools, parks, and local amenities, 285 Murray Crescent combines comfort, convenience, and practicality, all in one inviting package. (id:6769)

Arun Alleluia

RE/MAX Kelowna

Phone: (250) 863-5693

<http://www.arunalleluia.ca/>



RE/MAX Kelowna
100-1553 Harvey Avenue
Kelowna, BC,
Canada